

CANNING TECHNOLOGY

F400 CAN SEAMERS



Groundbreaking – modular – cost-efficient

The F400 series of can seamers feature flexible, modular manufacturing processes that translate into tailor made and cost-efficient solutions for the food and can manufacturing industries. The machines of the F400 series can be configured for 3 to 6 seaming stations and speed ranges from 60 to 600 cans/minute (low to mid-range capacities).

Concept / Design

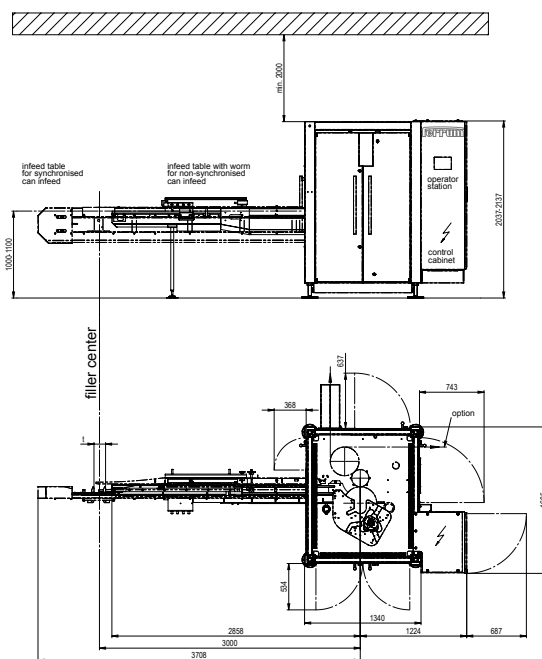
- + Modular assembly and compact design
- + Separate drives for seaming spindles from the actual machine
- + Sophisticated sanitation system
- + Automatic and loss-free oil lubrication system
- + Motorized height adjustment with digital display
- + Seaming roll Easy Rider lifetime lubricated
- + Stainless steel machine enclosure with built-in control cabinet
- + The standard operator panel is integrated directly into the control cabinet
- + Entire seaming area in stainless steel
- + Large service doors and wide access openings

Options

- + Electronic synchronization of filler and seamer utilizing servo motors
- + Undercover steam injection
- + Extended lid feed magazine
- + WIP (Wash-In-Place) cleaning system with spray nozzles
- + Flushing device
- + Straight line infeed table for a synchronized operation
- + Infeed table for can bodies for can manufacturing application
- + Screw infeed table until transfer to the lifting station
- + Disengageable seaming cam 2nd OP (F405 / F406)
- + Plunger type topper device for chain pitch 152,4 [6.00] and 161,9 mm [6.37]
- + Casing for gastight application
- + Lifting station with seaming plate drive break system
- + Timed star wheel before infeed worm
- + Operator panel free-standing
- + Swiveling control desk
- + Quick & comfort changeover
- + Basic machine versions: stand-alone, combi-machine, chili milkpowder, clincher, end seamer

Benefits for the customer

- + Increased accuracy for lightweight can and end applications
- + Simple operation and cleaning
- + Minimal maintenance requirements
- + Maximum safety environment for machine operators
- + Completely self-contained oil lubrication system eliminates the need for machine greasing
- + Increased residual machine value through the use of corrosion-free materials
- + Reduced spare parts inventory due to our use of standardized components
- + Can discharge right-angled or parallel to can infeed
- + Non-stop 24-h operation



Technical data

Model		F403	F404-T1	F404-T2	F405	F406
No. of seaming stations		3	4	4	5	6
Capacity	cans/min	60 - 270	80 - 360	80 - 360	100 - 500	120 - 600
Motor	kW	2.2 / 4.0	2.2 / 4.0	2.2 / 5.0	2.2 / 5.0	2.2 / 5.0
	[HP]	[3 / 5.5]	[3 / 5.5]	[3 / 6.7]	[3 / 6.7]	[3 / 6.7]
Can diameter	mm	50 - 99	50 - 99	99 - 154	50 - 99 (106)	50 - 99
	[Imp]	[200 - 401]	[200 - 401]	[401 - 603]	[200 - 401 (404)]	[200 - 401]
Can height (standard)	mm	56 - 200	56 - 200	56 - 200	56 - 200	56 - 200
	[Imp]	[204 - 714]	[204 - 714]	[204 - 714]	[204 - 714]	[204 - 714]
Can height (special)	mm	28 - 180	28 - 180	28 - 180	28 - 180	28 - 180
	[Imp]	[102 - 701]	[102 - 701]	[102 - 701]	[102 - 701]	[102 - 701]
	mm	100 - 250	100 - 250	100 - 250	100 - 250	100 - 250
	[Imp]	[315 - 913]	[315 - 913]	[315 - 913]	[315 - 913]	[315 - 913]
Chain pitch «t»	mm	190.5	152.4	209.5	152.4 / 161.9 / 171.5	133.4 / 142.9
	[inch]	[7.5]	[6.0]	[8.24]	[6.0 / 6.37 / 6.75]	[5.25 / 5.62]
Weight approx.	kg (netto)	2'900	3'000	3'200	3'300	3'400
	[lbs (netto)]	[6'400]	[6'600]	[7'100]	[7'300]	[7'500]

Technical changes are reserved
 03/23 / EN / KLS / B / © Ferrum Packaging Ltd