



ferrum

F400 series

**CAN SEAMERS FOR THE FOOD INDUSTRY AND
CAN MAKING.**



Up to 36'000 cans/hour

THE F400 SERIES

Ferrum's F400 can seamers combine robust engineering with intelligent design that simplifies operation, reduces downtime, and ensures lasting value.

Built for the **food and can manufacturing industries**, these seamers deliver exceptional accuracy while providing outstanding **safety, hygiene, and efficiency**.

With minimal maintenance, self-lubricating systems, and flexible configuration options, they offer real-world advantages **that boost productivity and lower total cost of ownership**.

SMART MODULAR DESIGN

- + **Compact, modular design** with stainless steel construction and integrated control cabinet
- + **Independent seaming spindle drives** and motorized height adjustment with digital display
- + **Hygienic operation** through lifetime-lubricated seaming rolls, automatic oil system, and wide access for easy cleaning

HYGIENE & CLEANABILITY

- + **Stainless steel and corrosion-free materials** throughout the seaming area
- + Fully automatic, **closed oil lubrication system**
- + **Wash-In-Place (WIP)** and **flushing options** available

OPERATOR-FRIENDLY FEATURES

- + **Quick change system** for fast and easy changeover
- + **Digital height adjustment** with built-in operator panel
- + **Large service doors and wide access openings** simplify maintenance and inspection

CUSTOMER VALUE & ROI

- + Optimized for **hygienic** can applications
- + Standardized components **reduce spare parts stock**
- + **Corrosion-free materials** extend equipment lifespan

PERFORMANCE

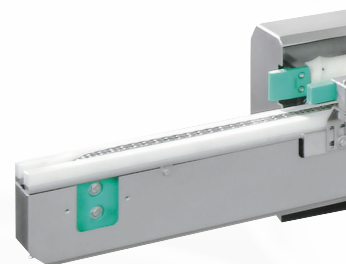
F403 | up to 16'200 cans/hour

F404-T1 | up to 21'600 cans/hour

F404-T2 | up to 21'600 cans/hour

F405 | up to 30'000 cans/hour

F406 | up to 36'000 cans/hour



TECHNICAL DATA

UNIQUE FEATURES

- + **Gastight housing** for sensitive filling environments
- + **Seaming plate drive brake** system for precision handling
- + **Quick & Comfort change-over** for faster setup
- + **Market-specific machine types:** stand-alone, combi, chili, milk powder, clincher, end seamer

CUSTOMIZATION & OPTIONS

- + **Electronic synchronization** of filler and seamer utilizing servo motors
- + Undercover **steam injection**
- + **Disengageable and quick-adjusting seaming cam** for 2nd OP
- + And more...



FERRUM PACKAGING LTD.

GLOBAL SUPPORT, WHEREVER YOU ARE

- LOCATIONS
- REPRESENTATIVES
- SERVICE CENTER



FERRUM PACKAGING LTD.

Industriestrasse 11
5503 Schafisheim
Switzerland
T +41 62 889 13 11
packaging@ferrum.net

FERRUM PACKAGING INC.

880 Bahcall Court
Waukesha, WI 53186
USA
T +1 877 337 7863
canning.sbusa@ferrum.net

FERRUM PACKAGING (KUNSHAN) CO., LTD.

No. 329, Jujin Road, Zhangpu Township
215321 Kunshan City
Jiangsu Province, P.R. China
T +86 512 3662 5104
canning@ferrumchina.com

FERRUM PACKAGING WESTERN AFRICA SA

Immeuble SCI Le Gallia
Intersection Rue du 7 Décembre et Rue des
Alizés, Biétry Zone 4, Abidjan, Côte d'Ivoire
packaging@ferrum.net

FERRUM PACKAGING (VIETNAM) CO., LTD.

60A Hoang Van Thu Str. Ward 09,
Phu Nhuan Dist., Ho Chi Minh City,
Vietnam
packaging@ferrum.net

FERRUM PACKAGING (THAILAND) CO., LTD.

591 UBC II Bldg., 16th Floor, Room 1606
Sukhumvit 33, Sukhumvit Road,
10110 Klongton-Nua, Wattana, Bangkok
Thailand
packaging@ferrum.net

FERRUM PACKAGING (UK) CO., LTD.

Unit 6 Monkspath Business Park
B90 4NY Shirley Solihull
United Kingdom
packaging@ferrum.net

FERRUM PACKAGING BRASIL LTDA.

Bairro Pinheirinho, Rua Eduardo Ferragut, 35
13280-000 Vinhedo-SP, Brasil
T +55 (19) 3826 4200
fabio@ferrum.com.br



LEARN MORE ABOUT
THE F400 SERIES



GET IN CONTACT WITH OUR
CAN SEAMER EXPERTS

Ferrum Packaging Ltd. | Industriestrasse 11 | 5503 Schafisheim | Switzerland
Tel. +41 62 889 13 11 | packaging@ferrum.net | ferrum.net